

@infinitem

create + lead + learn

**Exchange Exhibit
of Faculty Work**

Hebei Normal University
Kent State University
Sichuan University

2015 (创+导+学)

无止境@

中美教授作品交流展

河北师范大学
肯特州立大学
四川大学

About this book and its QR codes

This is a culture-bridging show in which unique personal and cultural stories, as well as related technical and conceptual information, can be shared with diverse audiences via advanced media. Group exhibitions can only give the audience a limited view of the scope of the artists' creativity, so this technology opens the door to their studio and allows the audience to peer in.

QR codes can be scanned by smartphones and other handheld devices and read by QR-reader apps. The reader will then open up the @infinitem website directly to the individual artist's page, which contains additional biographic information and creative works.

This catalog was published in conjunction with the @infinitem exhibition held at the Kent State University Museum from July 24, 2015 to January 10, 2016.





create + lead + learn

**Exchange Exhibit
of Faculty Work**

Hebei Normal University
Kent State University
Sichuan University

**2015 (创+导+学)
无止境@
中美教授作品交流展**
河北师范大学
肯特州立大学
四川大学

Contents

Preface	2
Hebei Normal University	3
Kent State University	22
Sichuan University	41
Artist Index	60

About @ Infinitum (Create + Lead + Learn) Exchange Exhibit of Faculty Work

We initiated this project as a celebration of more than three decades of diplomatic ties between the United States of America and the People's Republic of China. This exchange exhibit serves as an experimental channel for direct connections among contemporary studio faculty members in both cultures.

Gravitating toward uniqueness is typical in new artistic creation and cultural expression, which may inadvertently overemphasize contradictory outcomes stemming from differences. Sharing similarities—especially artistic sensitivity and creative vision—and reflecting upon connections and distinctions can create opportunities to bond and open a space for interconnectedness, the ultimate goal of this project.

We believe that the ongoing development of thought-provoking ideas and enduring approaches helps foster greater mutual trust and intensified understanding among global communities.

(创+导+学)无止境@ 中美教授作品交流展 办展缘起

时光荏苒，中美建交三十余载，为了提供中美教授对话交流的创新平台，我们创办了本次的展览。

重视独特性已成为新的艺术创作和文化表达的典型趋势，但这也在无意间导致了（创作和表达）从追求差异走到过分强调矛盾和对立的误区。本项目的最终目标是通过分享作品间的相似性——特别是在艺术审美敏感性和视觉创意方面——并通过对这些联系和区别进行反思，加强中美之间的友谊与联系，为创作交流开辟一片新的天地。

我们相信，持续发展出令人深省的想法和耐久不衰的交流方式，将会促进全球社区间的相互理解，增强互信。



Hebei Normal University

Hebei Normal University, founded in 1902, is now located in Shijiazhuang City, the capital of Hebei Province. The university has undergone a series of mergers in the past century and has grown to be a key provincial university, jointly funded by the provincial government and the Ministry of Education. It is the only university that demonstrates integrated undergraduate education and provides teacher education for preschool education, elementary education, vocational education, and higher education. With the quick advancement of the Beijing-Tianjin-Hebei integration, the University's influence radiates far beyond its campus because HNU is actively involves itself in local economic and social development.

河北师范大学

河北师范大学是具有百余年发展历史和光荣传统的省属重点大学，由河北省人民政府和中华人民共和国教育部共建。学校起源于1902年，经历数次合并组建成新的综合性大学，目前学校为全省基础教育、职业教育、高等教育培养师资，积极服务河北经济建设和社会发展，并参与京津冀一体化进程。

Kent State University

Since its founding as a teacher-training school in 1910, Kent State has become an engine for economic, cultural and workforce development in Northeast Ohio and beyond. Its 8 campuses have earned acclaim for applying new knowledge to address the needs of the communities it serves and society as a whole. With a total of more than 46,500 students enrolled from all 50 states and 100 countries, it is the second largest in Ohio. Its more than 2,000 faculty members come from six different continents, and have degrees from 150+ national and international institutions.

肯特州立大学

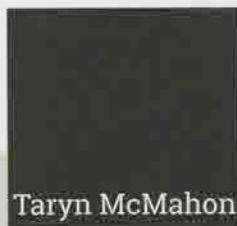
肯特州立大学建校于1910年，最初为师范大学。随着百年的发展，如今的肯大由8个校区共同构成，因其为大众提供所需的全新知识理念而获得广泛的盛誉。作为俄亥俄州第二大的公立综合性大学，肯大也是提高该州东北部经济、文化以及培养劳动力资源的中流砥柱。肯大46,500多名学生来自全美50个州和全球100多个不同国家。校内超过2,000名教职员毕业于全球六大洲150多所知名院校。

KENT STATE
UNIVERSITY





SupraEcology,
2014. Silkscreen on
polyester film, 96"x36".
L2015.15.1



My work uses images of patterned botanicals to investigate sites and histories, highlighting the complicated construction of an idea of nature. The resulting installations are responsive to the architecture of their site, changing viewers' ambulation through the space and creating a bodily experience. I am developing a visual vocabulary that mashes up the languages of 17th- and 18th-century botanical engravings, space age cartoons, and nature documentaries. Like a DJ spinning sounds culled from disparate sources, I endlessly remix forms from botanical engravings, my own drawings, and other popular culture.

本人作品利用结构鲜明的植物图片，探讨原址、历史，着重强调“自然”观念的复杂结构。最终生成的装置可与原址结构相适应，当观赏者移动时可以产生动态体验。本人试图创建一套崭新的视觉词汇表将十七、十八世纪的植物雕刻、太空时代动画片、自然纪录片里使用的语言重新整理。犹如打碟师精选乐曲一样，我致力于将植物雕刻、本人绘画与其它的流行文化融入到一起。

Michael Loderstedt

Michael Loderstedt's work incorporates photography, printmaking, artist books and installation. He received his BFA in Printmaking from East Carolina University in 1981 and his MFA from KSU in 1985. Loderstedt is a Professor of Art in Printmaking/Photography at the School of Art at KSU in Kent, Ohio. Michael Loderstedt lives with his wife, photographer Lori Kella, and their son Ethan in Cleveland, Ohio near the shore of Lake Erie.

Kirk Mangus

Kirk received his BFA from Rhode Island School of Design and his MFA from Washington State University with a major in Ceramics and minors in Sculpture and Drawing. Kirk taught for over 28 years at KSU until 2013 where he was the head of the Ceramics Department. Mangus grew up as the son of 2 art teachers. His parents introduced him to art at an early age.

Taryn McMahon

Taryn McMahon, an Assistant Professor at Kent State, received her MFA from the University of Iowa and BFA from The Pennsylvania State University. Recent accomplishments include solo exhibitions at William Busta Gallery, Cleveland, OH; The Print Center, Philadelphia, PA; and the Lexington Art League, Lexington, KY. Her work has also been widely exhibited both nationally and internationally in two-person and group exhibitions.

Jack McWhorter

Jack McWhorter is Associate Professor of Painting at KSU's Stark County campus in Canton, Ohio. Jack has been an Artist in Residence at various programs in Ohio and abroad, including the American International School in Ovda, Israel. His recent shows include the WAH Center in Brooklyn, Sint Lucas School of Art & Architecture and de Bousil Gallery in Brussels, Belgium; Jeffrey Leader Gallery, New York City; Sylvia White Gallery, in California; Sienna Art Institute, Italy.

Noël Palomo-Lovinski

Noël Palomo-Lovinski, has a MFA (Textiles), 2009 from KSU, School of Art, a MA in Visual Culture, 2001 from New York University, and a BFA in Fashion Design, 1994 from Parsons School of Design. Noël's area of research, in written and creative endeavors, centers on the future of fashion as it relates to design education, design responsibility, sustainability as well as understanding the cultural milieu of fashion in the forms of pop culture, technology and contemporary design practice.

肯迈克尔·罗德斯特德的作品包含摄影、版画、艺术家书刊以及装置艺术等领域。他于1981年获得东加利福尼亚大学版画专业的美术专业学士学位，1985年于肯大获得美术专业硕士学位。他是肯大艺术学院版画及摄影系的教授。迈克尔·罗德斯特德与妻子摄影师洛莉·克拉及儿子伊桑住在俄亥俄州克利夫兰伊利湖附近。

柯克·马库斯获得了罗德岛设计学院的美术专业学士学位，华盛顿州立大学的美术专业硕士学位。他主修制陶业，选修雕塑和绘画。他乐于做实验，为了满足自己的求知欲，一直在研究新的材料，创作过程和技术。柯克是肯大陶艺系系主任至2013年教学28年。

唐琳·麦美弘是肯大助理教授。她于爱荷华大学艺术学院获得美术专业硕士学位，于宾州大学获得美术专业学士学位。近期在美国多地举办了个人作品展览。这些举办地包括俄亥俄州克利夫兰市William Busta美展中心、宾州费城市印刷中心、肯德基州列克星敦市列克星敦艺术联盟。她的作品也曾多次在美国国内外双人展和群展中展出。

杰克·麦克沃特是绘画系副教授。他在肯大于俄亥俄州坎顿的史达克校区教课。杰克也是一个艺术创业家，从事俄亥俄州和国外的各种项目，包括以色列，奥瓦达的美国国际学校。他最近的展览包括布鲁克林的WAH中心、比利时，布鲁塞尔的信卢卡斯艺术和建筑学院和 de Bousil 画廊，纽约市的杰弗里领袖画廊，加利福尼亚的西尔维娅白画廊，意大利的西耶娜艺术学院。

诺埃尔·彭略默·楼威斯妮，于1994年获得帕森设计学院时装设计的美术专业学士学位，于2001年获得纽约大学视觉文化的艺术硕士学位，于2009年在肯大艺术学院获得美术专业硕士学位（纺织类）。诺埃尔的研究集中在未来时尚方面，它涉及到设计教育，设计责任，可持续性以及对流行文化，技术和当代设计实践为形式的时尚文化环境的理解。

Darice Polo

Darice Polo, an Associate Professor and Coordinator of the Drawing Program at KSU, received her BFA from the School of Visual Arts in New York and MFA from the State University of New York at Albany. She has exhibited her drawings and paintings at the University of Puerto Rico in Mayaguez, Haven Arts Gallery in New York; the Mission Cultural Center for Latino Arts in San Francisco; Ridderhof Martin Gallery in Fredericksburg, Virginia; the Visual Arts Center of New Jersey; and the Urban Institute for Contemporary Arts in Grand Rapids, Michigan.

Christopher Ransom

Christopher Ransom has a BA degree from the University of Texas at Austin, a BFA in Graphic Design from the Philadelphia College of Art, and a MFA in Photography from the University of Delaware. He is a tenured Associate Professor in the School of Visual Communication Design at KSU, Kent, Ohio.

Mark Schatz

Mark Schatz received his BFA in Sculpture from the University of Michigan and an MFA in Sculpture from the University of Texas in Austin. He is currently an Assistant Professor and the Foundations Program Coordinator for the School of Art at KSU. His practice includes sculpture, installation, drawings, and photography and has been shown widely, including the exhibition "New Image Sculpture" at the McNay Art Museum in San Antonio.

德里斯·保罗，肯大美术系副教授兼绘制图协调员，她获得纽约的视觉艺术学院授予的美术专业硕士学位，以及纽约州立大学奥尔巴尼分校的美术专业学士学位。她的素描和油画曾在多地展出，如马亚圭斯的波多黎各大学、纽约的天堂艺术画廊、旧金山的拉丁美洲文化传播艺术中心、弗吉尼亚州弗雷德里克斯堡的李德荷服马丁画廊、新泽西视觉艺术中心，以及密西根州大急流市的城市当代艺术协会。

克里斯多夫·兰塞姆获得了德克萨斯大学奥斯汀分校的美术学士学位，费城艺术学院绘画设计的美术专业学士学位，特拉华州大学的摄影美术专业硕士学位。他在俄亥俄州肯特市的肯大视觉传媒设计学院被授予终身副教授职位。

马克·夏兹在密歇根大学获得雕塑系的美术专业学士学位，在德克萨斯大学奥斯汀分校获得雕塑系的美术专业硕士学位。他现为肯大艺术学院的助理教授，并担任基础课程项目协调员。他的作品涉及雕塑、装置艺术、绘画、摄影等多个领域。

**This project has received generous support from
the E. Rhodes and Leona B. Carpenter Foundation,
the Kent State University Research Council,
and the AY2013-14 Catalyst Project grant from the KSU College of the Arts.**

**The Kent State University Museum has received support from the Ohio Arts Council
through a Sustainability Grant.**

Hebei Normal University Work Team

Dai Jianbing 戴建兵 Gao Zhihui 高志怀 Jiang Shiguo 蒋世国
Kang Zhenguo 康振国 Ren Jian 任剑 Xue Xianlin 薛现林
Yang Chunming 杨春明 Zhang Aimin 张爱民

Kent State University Work Team

College of the Arts: John Crawford Ralph Lorenz Brendan Reynolds

School of Art: Christine Havice Koon Hwee Kan 江君慧 Janice Lessman-Moss

KSU Museum: Jean Druessedow Joanne Fenn Sara Hume James Williams

Catalogue and Website Design Team: Joan Inderhees Larrie King Joseph Kirkpatrick
Jamie Lefevre Sarah Rutherford Sheu Feng-Ru 许凤如 Zhang Weiping 张卫平

Office of Global Education: Marcello Fantoni Sarah Malcolm Simon Zhang

Sichuan University Work Team

Huang ZongXian 黄宗贤 Wang Tao 王涛 Xiong Yu 熊宇 Zhang Su 张苏



©2015

Kent State University Museum

ISBN: 0-9968318-7-X

All rights reserved. No part
of this publication may be
reproduced or transmitted
in any form or by any means,
electronic or mechanical,
including photocopying,
recording or any information
storage or retrieval system,
without the permission in
writing from the Kent State
University Museum.



KENT STATE[®]
UNIVERSITY
Museum